

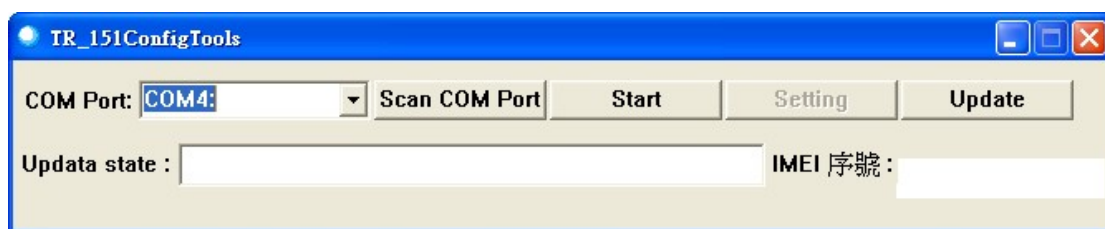
# Configuration Tool Operation

Step 1: Please make TR-151 enter setting mode by adjusting DIP switch 3 to ON position under power-off status.

Step 2: Please connect TR-151 and PC by the USB cable.

Step 3: Please turn on the power of TR-151.

Step 4: Please run the “Config Tool”



Step 4: Please click “Scan COM Port”.

When the tool detect the COM port, you will see “Open Success”

Step 5: Please click “Start” and then click “Setting”

Then you can configure TR-151 by the tool